

Morning Presentations

Singapore: Dr. Matthias Maiwald Professor National Univ. of Singapore, and at Duke-National Univ. of Singapore Graduate Medical School in Singapore.



Prof. Lidia Morawska, "Airborne infection transmission & Impact on Frontline Workers" Time Mag. Top 100 Most influential persons in the World for 2021. (Australia)



Prof. Nele Brusselaers, MD, PhD "Evaluation of science advice during the COVID-19 pandemic in Sweden" (Sweden)



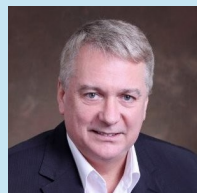
Prof. Imogen Mitchell, MBBS, PhD Canberra Health Services, Canberra, Australia. "Australia's experience of COVID-19 Workplace Safety"



Prof. Laith Jamal Abu-Raddad, PhD "Immune protection of COVID-19 vaccination and natural infection" (Qatar)



Prof. Dale Fisher "COVID-19: Protecting Staff, Protecting Patients and Staying Practical", National Univ. Health Systems, Singapore & WHO's Global Outbreak Alert & Response Network Steering Cmte.



Health Watch USA
Kevin T. Kavanagh, MD, MS
Board Chairman
P.O. Box 1403
Somerset, KY 42502

Sponsoring Organizations

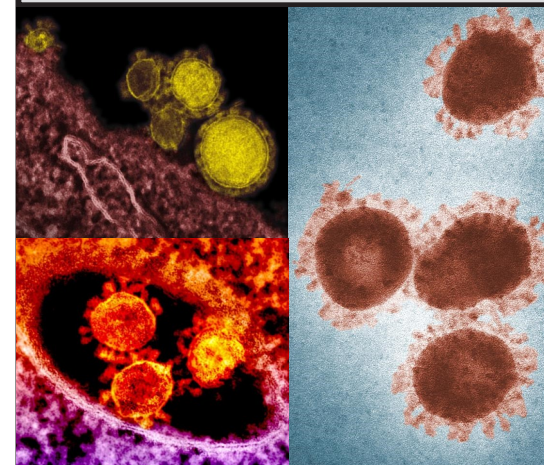
Health Watch USAsm

Massachusetts Nurses Association
Kentucky Rural Health Association
Southern Kentucky AHEC
Northeast Multistate Division
Gardiner Consulting Group



16th Annual Conference
COVID-19
Frontline Worker Safety:
A Global Perspective

Frontline Workers: A Global Perspective



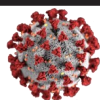
International
Authorities From
Around the World



Introduction by:
Past Surgeon
General,
Joycelyn Elders,
MD

Sept. 14, 2022 Webinar
<https://healthconference.org>

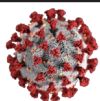
Outcomes & Objectives



- Identify infection control strategies that prevent and mitigate the spread of COVID-19 disease among both frontline workers and patients.
- Advise retailers, schools, and others on strategies they should undertake to establish a safe workplace which protects both frontline workers and patrons.
- Identify infectious disease infrastructure deficiencies in the COVID-19 pandemic.
- Discuss cultural and socioeconomic barriers and social disparities which place socially disadvantaged populations at increased risk of infection and severe disease.
- Explain the risks of disability and death from not only acute COVID-19 but also the disabling effects of Long COVID.

Continuing Education

AMA Cat 1 CMEs & CEUs Provided at No Charge

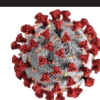


The conference has two accreditation agencies for healthcare continuing education.

- ⇒ **Northeast Multistate Division:** This activity has been submitted to the Northeast Multistate Division Education Unit for approval to award 6 contact hours. The Northeast Multistate Division Education Unit is accredited as an approver of nursing continuing professional development by the American Nurses Credentialing Center's Commission on Accreditation.
- ⇒ **Southern Kentucky AHEC:** Physician/Physician Assistant/Nurse Practitioner/Nursing Home Administrator (AMA Category I) will be provided. In addition, Respiratory Therapy (KBRC), Physical Therapy, Pharmacy, Dentistry, and Occupational Therapy credits will be applied for through the appropriate Kentucky Oversight board.

Educational credits are funded by Health Watch USA.

Conference Agenda



8:40 to 8:50 AM - Introduction

8:50 am to 12:00 noon - Morning Presentations

12:40 pm to 1:00 pm - Dr. Joycelyn Elders

1:00 pm to 3:00 pm - Afternoon Presentations

3:00 pm to 4:00 pm - Panel Discussion:
The Normalization of Workarounds in Health care: An Ongoing American Crisis.

4:00 pm to 4:15 pm—Conference Summary and Closing Remarks, Dr. Kevin Kavanagh

* All times are Eastern Time Zone. All participants should log on 10 to 15 mins before the start of the program.

[Download Detailed Agenda](#)

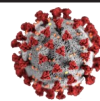
[Download Speakers' Biographies](#)

For More Info: <https://healthconference.org>

Due to unforeseen circumstances, speakers, topics and times may change without notice.

Conference Registration

Provided at No Charge by Health Watch USAsm



To register go to:

<https://healthconference.org>

or contact the conference coordinator, Cathy Kavanagh, at 606-425-7278.

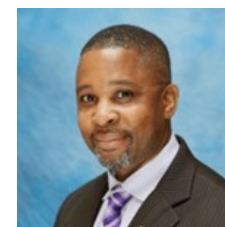


Afternoon Presentations

Ambassador Deborah Birx, MD
Presenting "COVID-19 USA - Lessons and new tools to improve workplace safety"



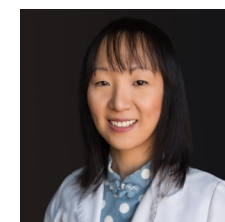
Frazier Beatty, Ph.D., MPH
Presenting "Impact of Healthcare Disparities on the Frontline"



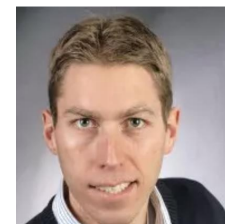
Ziyad Al-Aly, MD Presenting
"An Overview of Long COVID"



Mengyi "Zed" Zha, MD
Presenting "Workplace Violence Against Healthcare Workers"



Eike Steinman, PHD
Presenting "Transmission and Inactivation of SARS-CoV-2" (Germany)



Panel: "The Normalization of Deviance : " Jeannie Cimiotti, RN PhD, Chris Pontus, MS, RN

Kevin Kavanagh, MD, MS Board Chairman of Health Watch USA. Intro. & Summary Remarks.